

Royal Oak Dr between Emily Carr Dr and Chatterton Way

October 28, 2019 To November 01, 2019



The data presented here is for information purposes only and should not be considered authoritative for construction, geotechnical, engineering, navigational, legal, or other site-specific uses. The information shared is owned by the Transportation Division of the Engineering Department at the District of Saanich. Accuracy is not guaranteed.

Start Date: 28-Oct-19
 Start Time: 0:03
 Station ID: M0030-04

Location 1: Royal Oak Dr between Emily Carr Dr and Chatterton Way

Note:

DATE:	October 28, 2019		October 29, 2019		October 30, 2019		October 31, 2019		November 1, 2019		WK AVG		WK AVG	HOURLY
	MON		TUE		WED		THURS		FRI		EB	WB	CH 1+2	%
Time:	EB	WB	EB	WB	EB	WB	EB	WB	EB	WB	EB	WB		
12-1 AM			26	8	17	12	9	14			17	11	29	0.2%
1-2 AM			7	10	9	5	9	2			8	6	14	0.1%
2-3 AM			8	5	6	2	5	7			6	5	11	0.1%
3-4 AM			6	12	3	13	5	10			5	12	16	0.1%
4-5 AM			11	30	10	26	14	22			12	26	38	0.2%
5-6 AM			41	103	38	77	33	102			37	94	131	0.9%
6-7 AM			86	205	96	207	107	197			96	203	299	1.9%
7-8 AM			337	462	339	441	437	437			371	447	818	5.3%
8-9 AM			493	659	509	685	507	728			503	691	1194	7.8%
9-10 AM			437	490	434	582	443	561			438	544	982	6.4%
10-11 AM			432	481	438	495	468	493			446	490	936	6.1%
11-12 PM			536	531	504	557	550	555			530	548	1078	7.0%
12-1 PM			552	548	568	540	501	549			540	546	1086	7.1%
1-2 PM			540	517	521	524	558	485			540	509	1048	6.8%
2-3 PM			525	577	559	532	612	631			565	580	1145	7.5%
3-4 PM			624	643	627	662	661	690			637	665	1302	8.5%
4-5 PM			703	597	727	645	759	612			730	618	1348	8.8%
5-6 PM			733	562	704	531	747	490			728	528	1256	8.2%
6-7 PM			489	427	488	445	353	326			443	399	843	5.5%
7-8 PM			319	267	362	300	275	239			319	269	587	3.8%
8-9 PM			277	204	296	214	272	290			282	236	518	3.4%
9-10 PM			207	145	206	174	220	185			211	168	379	2.5%
10-11 PM			113	72	107	72	114	115			111	86	198	1.3%
11-12 AM			53	38	62	29	66	49			60	39	99	0.6%
LANES			7555	7593	7630	7770	7725	7789			7637	7717	15354	100.0%
TOTAL			15148		15400		15514				15360			
	MON		TUE		WED		THURS		FRI		WK AVG			

PEAK HOUR					TOTAL VEHICALS-PEAK PERIODS		2 HOUR PEAK INTERVALS							
MAX. 7 - 9 am PEAK HOUR	1194	⇒	7.8%	between 8-9 AM	6778	⇒	6 HR TOTAL	2 HR AM (7 - 9 AM)						
MAX. 7 - 11 am PEAK HOUR	1194	⇒	7.8%	between 8-9 AM	4615	⇒	4 HR TOTAL	VEH / HR	VEH / 2HR	2 HR %				
								7-8 AM	818	2011	13.1%			
								8-9 AM	1194					
MAX. 11 am - 1 pm PEAK HOUR	1086	⇒	7.1%	between 12-1 PM			24 HOUR FACTORS	2 HR NOON (11 - 1 PM)						
MAX. 11 am - 3 pm PEAK HOUR	1145	⇒	7.5%	between 2-3 PM				VEH / HR	VEH / 2HR	2 HR %				
								11-12 PM	1078	2164	14.1%			
MAX. 4 - 6 pm PEAK HOUR	1348	⇒	8.8%	between 4-5 PM				12-1 PM	1086					
MAX. 3 - 6 pm PEAK HOUR	1348	⇒	8.8%	between 4-5 PM			2.27	⇒	6-24 HR FACT.	2 HR PM (4 - 6 PM)				
							3.33	⇒	4-24 HR FACT.	VEH / HR	VEH / 2HR	2 HR %		
										4-5 PM	1348	2603	17.0%	
										5-6 PM	1256			

Royal Oak Dr between Emily Carr Dr and Chatterton Way

Westbound

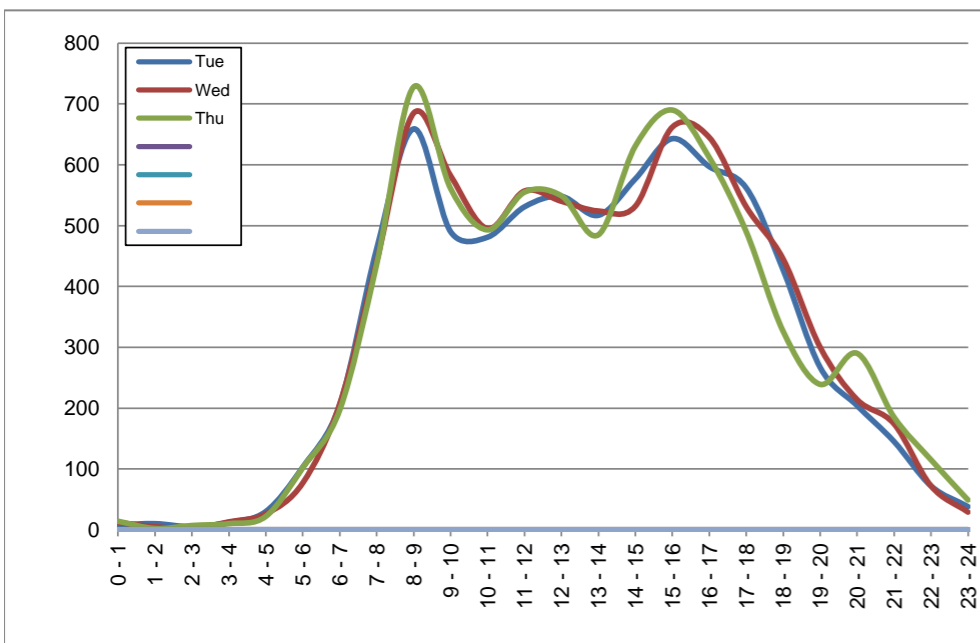
October 29, 2019 to October 31, 2019

Hourly Volumes

Time Period	Tue	Wed	Thu			
	Oct 29	Oct 30	Oct 31			
0 - 1	8	12	14			
1 - 2	10	5	2			
2 - 3	5	2	7			
3 - 4	12	13	10			
4 - 5	30	26	22			
5 - 6	103	77	102			
6 - 7	205	207	197			
7 - 8	462	441	437			
8 - 9	659	685	728			
9 - 10	490	582	561			
10 - 11	481	495	493			
11 - 12	531	557	555			
12 - 13	548	540	549			
13 - 14	517	524	485			
14 - 15	577	532	631			
15 - 16	643	662	690			
16 - 17	597	645	612			
17 - 18	562	531	490			
18 - 19	427	445	326			
19 - 20	267	300	239			
20 - 21	204	214	290			
21 - 22	145	174	185			
22 - 23	72	72	115			
23 - 24	38	29	49			
Day Total	7593	7770	7789			

15-Minute Volumes

Time Start	Tue	Wed	Thu				Time Start	Tue	Wed	Thu			
	Oct 29	Oct 30	Oct 31					Oct 29	Oct 30	Oct 31			
0:00	4	6	7				12:00	140	127	141			
0:15	2	2	3				12:15	145	144	150			
0:30	1	2	4				12:30	136	132	124			
0:45	1	2	0				12:45	127	137	134			
1:00	5	0	0				13:00	139	133	117			
1:15	0	3	2				13:15	139	146	128			
1:30	4	1	0				13:30	127	121	112			
1:45	1	1	0				13:45	112	124	128			
2:00	1	0	1				14:00	142	128	138			
2:15	1	1	3				14:15	145	133	164			
2:30	0	1	2				14:30	146	126	150			
2:45	3	0	1				14:45	144	145	179			
3:00	2	4	0				15:00	161	144	153			
3:15	3	2	3				15:15	167	161	183			
3:30	4	0	2				15:30	156	174	172			
3:45	3	7	5				15:45	159	183	182			
4:00	3	4	4				16:00	143	171	163			
4:15	6	3	3				16:15	166	174	156			
4:30	12	10	6				16:30	153	138	143			
4:45	9	9	9				16:45	135	162	150			
5:00	20	14	14				17:00	140	138	143			
5:15	20	23	21				17:15	137	135	125			
5:30	36	20	37				17:30	152	118	121			
5:45	27	20	30				17:45	133	140	101			
6:00	29	32	23				18:00	109	131	99			
6:15	31	35	38				18:15	117	123	85			
6:30	63	65	55				18:30	94	110	79			
6:45	82	75	81				18:45	107	81	63			
7:00	66	76	67				19:00	76	95	61			
7:15	94	83	82				19:15	68	80	54			
7:30	148	131	126				19:30	52	61	57			
7:45	154	151	162				19:45	71	64	67			
8:00	159	161	189				20:00	52	67	71			
8:15	171	176	185				20:15	53	54	76			
8:30	167	174	181				20:30	50	49	71			
8:45	162	174	173				20:45	49	44	72			
9:00	135	151	162				21:00	55	38	52			
9:15	125	132	148				21:15	30	55	59			
9:30	112	158	132				21:30	33	47	36			
9:45	118	141	119				21:45	27	34	38			
10:00	133	124	97				22:00	27	28	39			
10:15	120	128	145				22:15	24	13	28			
10:30	115	123	135				22:30	11	14	21			
10:45	113	120	116				22:45	10	17	27			
11:00	119	134	125				23:00	11	9	17			
11:15	161	133	145				23:15	9	7	9			
11:30	128	153	132				23:30	14	4	18			
11:45	123	137	153				23:45	4	9	5			



Site notes:

Royal Oak Dr between Emily Carr Dr and Chatterton Way

Eastbound

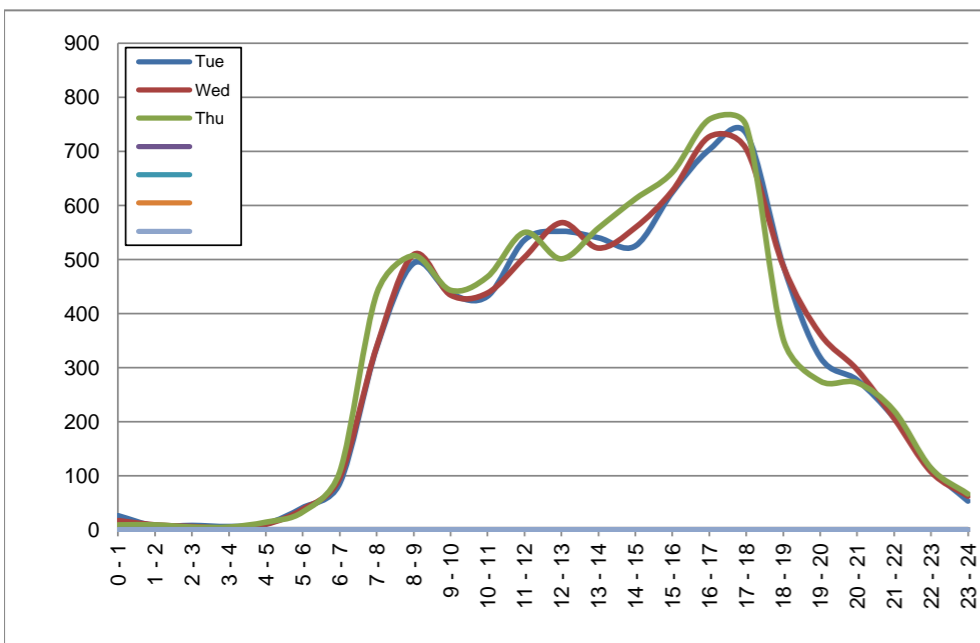
October 29, 2019 to October 31, 2019

Hourly Volumes

Time Period	Tue	Wed	Thu				
	Oct 29	Oct 30	Oct 31				
0 - 1	26	17	9				
1 - 2	7	9	9				
2 - 3	8	6	5				
3 - 4	6	3	5				
4 - 5	11	10	14				
5 - 6	41	38	33				
6 - 7	86	96	107				
7 - 8	337	339	437				
8 - 9	493	509	507				
9 - 10	437	434	443				
10 - 11	432	438	468				
11 - 12	536	504	550				
12 - 13	552	568	501				
13 - 14	540	521	558				
14 - 15	525	559	612				
15 - 16	624	627	661				
16 - 17	703	727	759				
17 - 18	733	704	747				
18 - 19	489	488	353				
19 - 20	319	362	275				
20 - 21	277	296	272				
21 - 22	207	206	220				
22 - 23	113	107	114				
23 - 24	53	62	66				
Day Total	7555	7630	7725				

15-Minute Volumes

Time Start	Tue	Wed	Thu				
	Oct 29	Oct 30	Oct 31				
0:00	7	7	3				
0:15	8	2	3				
0:30	4	5	2				
0:45	7	3	1				
1:00	3	1	3				
1:15	4	3	1				
1:30	0	1	3				
1:45	0	4	2				
2:00	3	1	2				
2:15	1	1	1				
2:30	2	1	1				
2:45	2	3	1				
3:00	0	0	1				
3:15	1	1	1				
3:30	4	1	1				
3:45	1	1	2				
4:00	2	1	3				
4:15	3	2	3				
4:30	2	2	2				
4:45	4	5	6				
5:00	8	6	3				
5:15	12	8	7				
5:30	11	12	8				
5:45	10	12	15				
6:00	13	9	12				
6:15	12	17	15				
6:30	24	34	41				
6:45	37	36	39				
7:00	61	58	52				
7:15	69	77	85				
7:30	99	83	133				
7:45	108	121	167				
8:00	131	147	139				
8:15	116	134	107				
8:30	133	108	120				
8:45	113	120	141				
9:00	130	108	117				
9:15	102	106	107				
9:30	113	118	104				
9:45	92	102	115				
10:00	111	99	111				
10:15	107	119	121				
10:30	105	109	108				
10:45	109	111	128				
11:00	120	120	129				
11:15	137	126	145				
11:30	148	136	151				
11:45	131	122	125				
12:00	123	131	127				
12:15	145	144	115				
12:30	138	145	122				
12:45	146	148	137				
13:00	120	133	140				
13:15	143	138	124				
13:30	131	121	143				
13:45	146	129	151				
14:00	116	138	139				
14:15	137	131	170				
14:30	127	149	158				
14:45	145	141	145				
15:00	144	170	175				
15:15	147	151	156				
15:30	160	154	166				
15:45	173	152	164				
16:00	153	170	167				
16:15	168	172	179				
16:30	202	193	192				
16:45	180	192	221				
17:00	207	183	228				
17:15	190	176	204				
17:30	190	181	162				
17:45	146	164	153				
18:00	145	143	114				
18:15	113	140	88				
18:30	113	100	87				
18:45	118	105	64				
19:00	86	104	69				
19:15	90	90	71				
19:30	73	83	68				
19:45	70	85	67				
20:00	65	73	76				
20:15	84	79	74				
20:30	62	73	61				
20:45	66	71	61				
21:00	72	59	73				
21:15	68	51	51				
21:30	28	43	45				
21:45	39	53	51				
22:00	38	37	31				
22:15	39	27	34				
22:30	14	25	15				
22:45	22	18	34				
23:00	19	17	25				
23:15	15	11	16				
23:30	9	12	13				
23:45	10	22	12				



Site notes:

Vehicle Speed Summary

Saanich Engineering Department

Count Id: [M0030-04](#)

Filename: [Royal Oak Dr between Emily Carr Dr and Chatterton Way-Oct-2019.xlsm](#)

Location: Royal Oak Dr between Emily Carr Dr and Chatterton Way

Note:

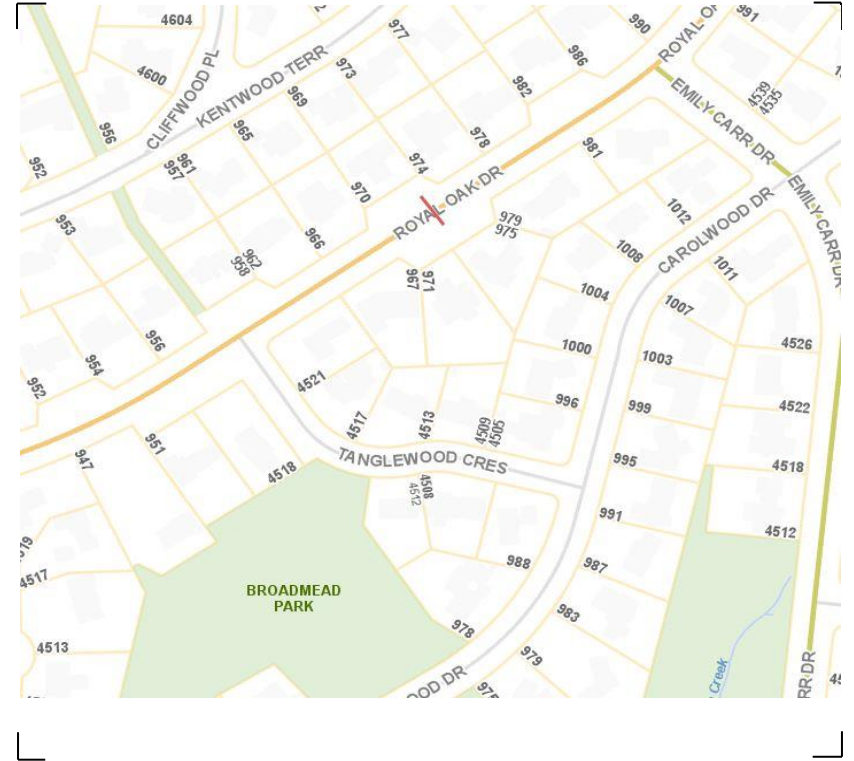
Direction: **East-West**

Dates: **October 28, 2019 To November 01, 2019**

Filtered data

AVG. SPEED	33 mph	53 km/h
50 % SPEED	33 mph	53 km/h
85 % SPEED	37 mph	59 km/h
95 % SPEED	39 mph	63 km/h

Location Map



Royal Oak Dr between Emily Carr Dr and Chatterton Way

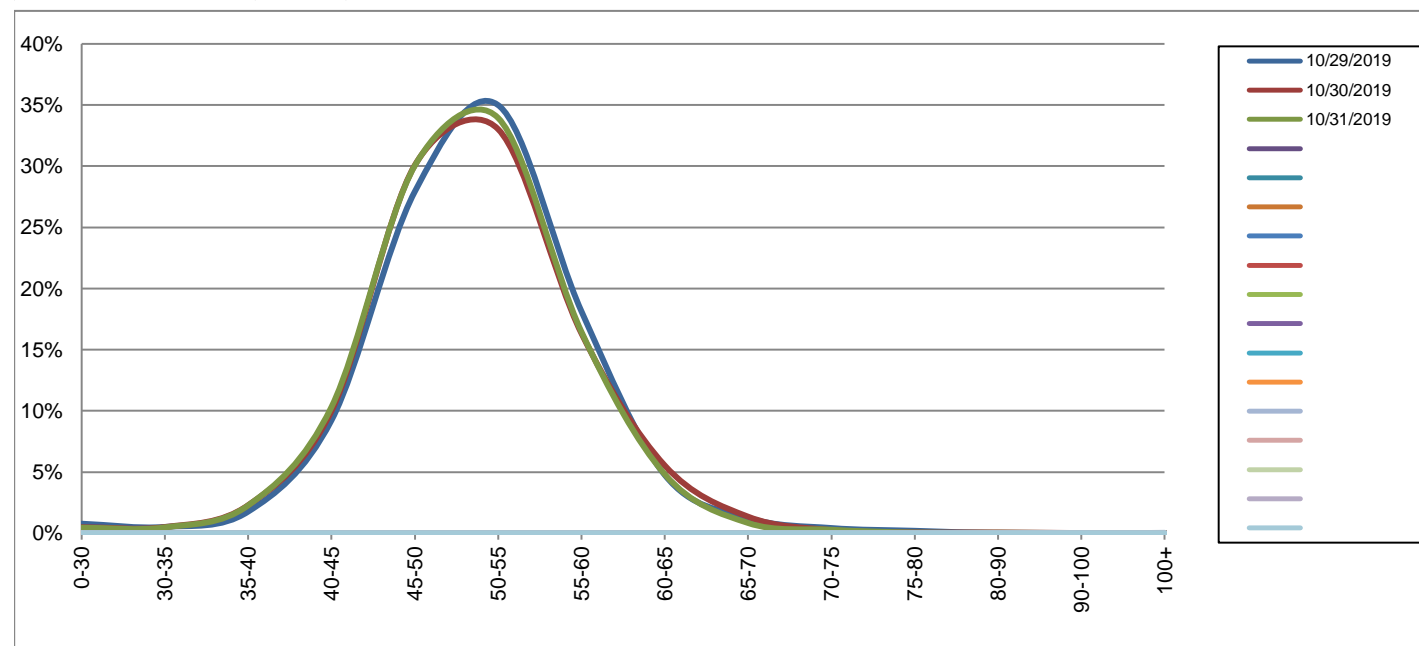
Westbound

October 29, 2019 to October 31, 2019

Daily Speed Bin Percentages															Daily Speed Bin Volumes														Total	Avg.
Bin #	1	2	3	4	5	6	7	8	9	10	11	12	13	14	1	2	3	4	5	6	7	8	9	10	11	12	13	14	Volume	Speed
Bin Speeds	0-30	30-35	35-40	40-45	45-50	50-55	55-60	60-65	65-70	70-75	75-80	80-90	90-100	100+	0-30	30-35	35-40	40-45	45-50	50-55	55-60	60-65	65-70	70-75	75-80	80-90	90-100	100+		
10/29/2019	0.8%	0.5%	1.8%	9.2%	27.9%	35.0%	18.1%	4.8%	1.3%	0.4%	0.2%	0.0%	0.0%	0.0%	59	39	134	701	2120	2657	1377	361	95	32	15	1	0	2	7593	51
10/30/2019	0.5%	0.5%	2.3%	10.0%	30.1%	33.0%	16.3%	5.5%	1.4%	0.3%	0.1%	0.1%	0.0%	0.0%	38	39	178	776	2337	2566	1269	430	105	20	5	5	1	1	7770	51
10/31/2019	0.4%	0.5%	2.3%	10.3%	30.0%	33.9%	16.5%	4.8%	0.8%	0.3%	0.1%	0.0%	0.0%	0.0%	35	37	177	804	2340	2644	1282	375	65	22	4	3	1	0	7789	51
Total	0.6%	0.5%	2.1%	9.9%	29.4%	34.0%	17.0%	5.0%	1.1%	0.3%	0.1%	0.0%	0.0%	0.0%	132	115	489	2281	6797	7867	3928	1166	265	74	24	9	2	3	23152	51

Speed Data Summary

Bin #	1	2	3	4	5	6	7	8	9	10	11	12	13	14	Total
Bin Speeds	0-30	30-35	35-40	40-45	45-50	50-55	55-60	60-65	65-70	70-75	75-80	80-90	90-100	100+	
Survey Total	132	115	489	2281	6797	7867	3928	1166	265	74	24	9	2	3	23152
% Total	0.6%	0.5%	2.1%	9.9%	29.4%	34.0%	17.0%	5.0%	1.1%	0.3%	0.1%	0.0%	0.0%	0.0%	100%
Accumulated %	0.6%	1.1%	3.2%	13.0%	42.4%	76.4%	93.3%	98.4%	99.5%	99.8%	99.9%	100.0%	100.0%	100%	
Inverse Accum. %	99.4%	98.9%	96.8%	87.0%	57.6%	23.6%	6.7%	1.6%	0.5%	0.2%	0.1%	0.0%	0.0%	0.0%	
Average Speed	51 KM/H														



Site notes:

Royal Oak Dr between Emily Carr Dr and Chatterton Way

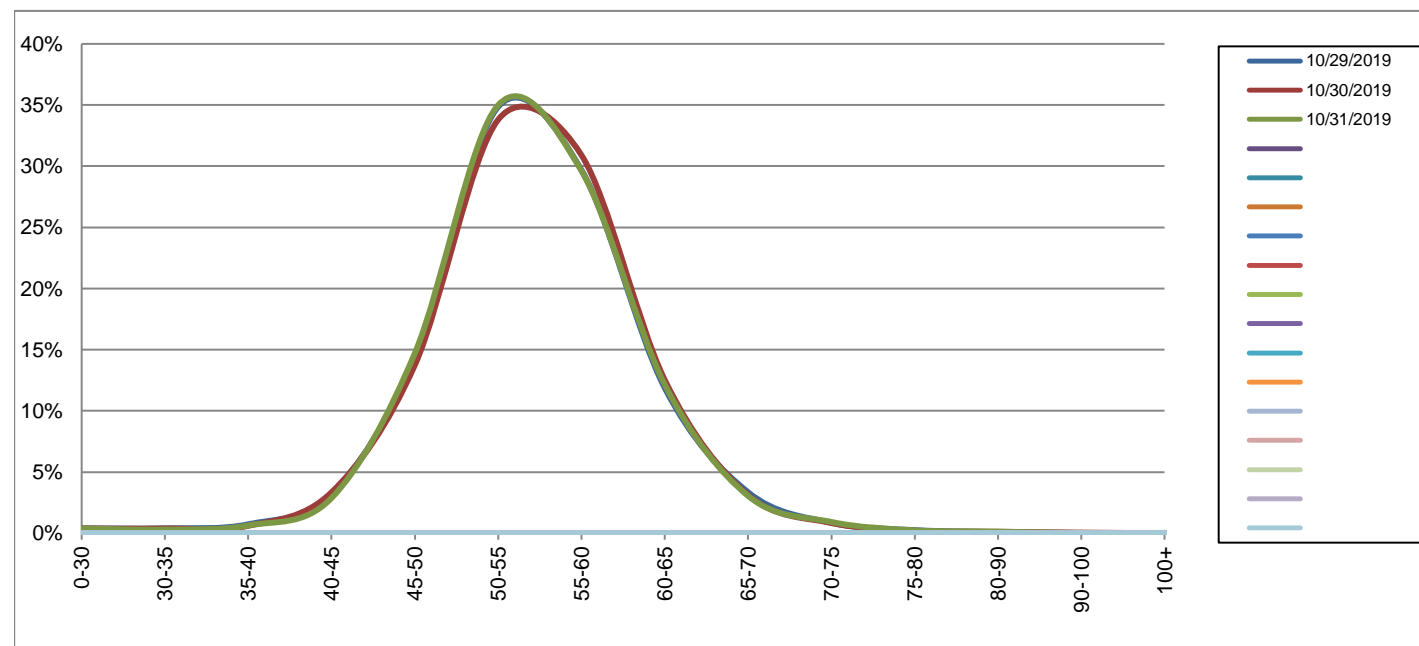
Eastbound

October 29, 2019 to October 31, 2019

Daily Speed Bin Percentages															Daily Speed Bin Volumes														Total	Avg.
Bin #	1	2	3	4	5	6	7	8	9	10	11	12	13	14	1	2	3	4	5	6	7	8	9	10	11	12	13	14	Volume	Speed
Bin Speeds	0-30	30-35	35-40	40-45	45-50	50-55	55-60	60-65	65-70	70-75	75-80	80-90	90-100	100+	0-30	30-35	35-40	40-45	45-50	50-55	55-60	60-65	65-70	70-75	75-80	80-90	90-100	100+		
10/29/2019	0.4%	0.4%	0.7%	3.2%	14.3%	34.9%	29.7%	11.9%	3.3%	0.8%	0.3%	0.1%	0.0%	0.0%	30	30	55	244	1077	2633	2243	897	253	64	19	7	1	2	7555	55
10/30/2019	0.4%	0.4%	0.6%	3.3%	13.7%	33.8%	30.9%	12.5%	3.1%	0.8%	0.2%	0.1%	0.1%	0.0%	30	29	46	255	1048	2579	2358	955	238	64	15	9	4	0	7630	55
10/31/2019	0.4%	0.3%	0.6%	2.9%	14.7%	35.0%	29.6%	12.1%	3.1%	0.9%	0.2%	0.1%	0.0%	0.0%	30	23	49	222	1136	2703	2288	938	236	71	18	10	1	0	7725	55
Total	0.4%	0.4%	0.7%	3.1%	14.2%	34.5%	30.1%	12.2%	3.2%	0.9%	0.2%	0.1%	0.0%	0.0%	90	82	150	721	3261	7915	6889	2790	727	199	52	26	6	2	22910	55

Speed Data Summary

Bin #	1	2	3	4	5	6	7	8	9	10	11	12	13	14	Total
Bin Speeds	0-30	30-35	35-40	40-45	45-50	50-55	55-60	60-65	65-70	70-75	75-80	80-90	90-100	100+	
Survey Total	90	82	150	721	3261	7915	6889	2790	727	199	52	26	6	2	22910
% Total	0.4%	0.4%	0.7%	3.1%	14.2%	34.5%	30.1%	12.2%	3.2%	0.9%	0.2%	0.1%	0.0%	0.0%	100%
Accumulated %	0.4%	0.8%	1.4%	4.6%	18.8%	53.3%	83.4%	95.6%	98.8%	99.6%	99.9%	100.0%	100.0%	100%	
Inverse Accum. %	99.6%	99.2%	98.6%	95.4%	81.2%	46.7%	16.6%	4.4%	1.2%	0.4%	0.1%	0.0%	0.0%	0.0%	
Average Speed	55 KM/H														



Site notes:

Royal Oak Dr between Emily Carr Dr and Chatterton Way

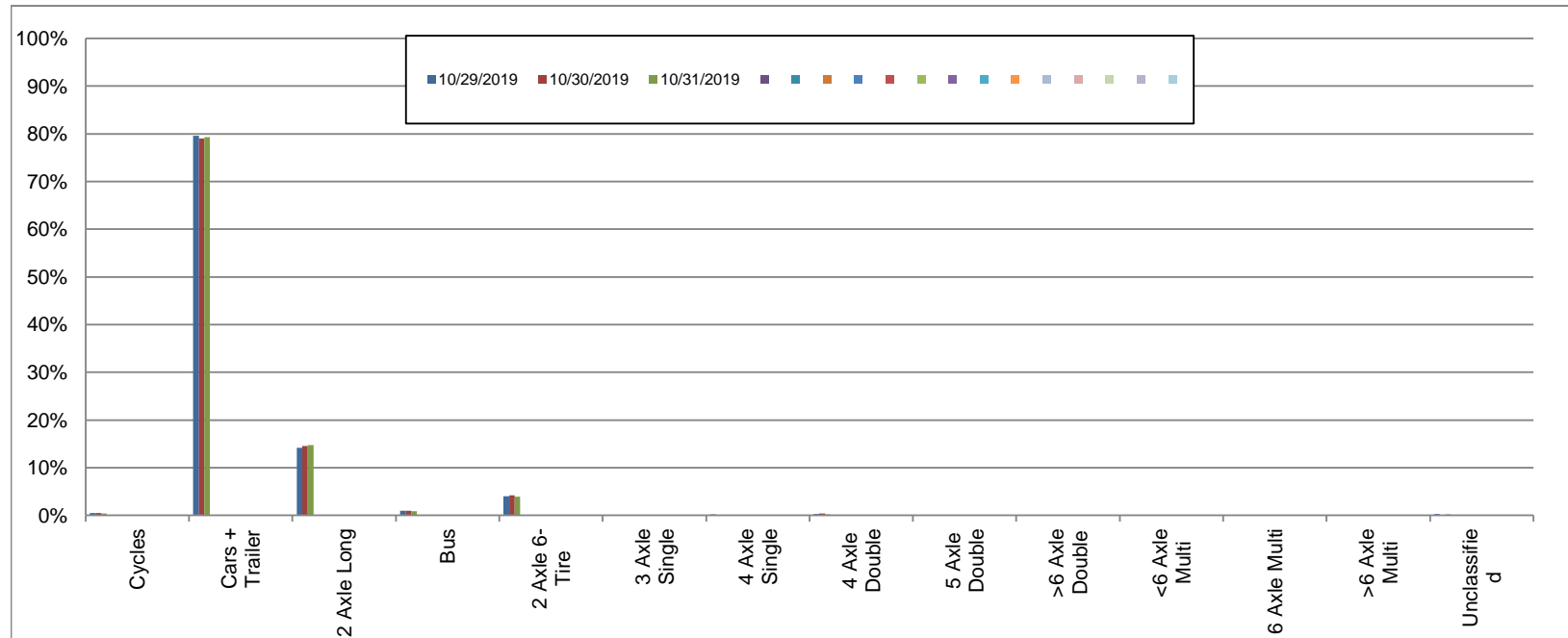
Westbound

October 29, 2019 to October 31, 2019

Daily Class Bin Percentages															Daily Class Bin Volumes														
Bin #	1	2	3	4	5	6	7	8	9	10	11	12	13	14	1	2	3	4	5	6	7	8	9	10	11	12	13	14	Total Volume
Bin Class	Cycles	Cars + Trailer	2 Axle Long	Bus	2 Axle 6-Tire	3 Axle Single	4 Axle Single	4 Axle Double	5 Axle Double	>6 Axle Double	<6 Axle Multi	6 Axle Multi	>6 Axle Multi	Unclassified	Cycles	Cars + Trailer	2 Axle Long	Bus	2 Axle 6-Tire	3 Axle Single	4 Axle Single	4 Axle Double	5 Axle Double	>6 Axle Double	<6 Axle Multi	6 Axle Multi	>6 Axle Multi	Unclassified	
10/29/2019	0.5%	79.6%	14.1%	0.9%	4.0%	0.1%	0.2%	0.3%	0.0%	0.0%	0.0%	0.0%	0.0%	0.3%	36	6041	1073	72	304	8	13	23	1	2	0	0	0	20	7593
10/30/2019	0.5%	79.0%	14.5%	1.0%	4.2%	0.2%	0.1%	0.4%	0.0%	0.0%	0.0%	0.0%	0.0%	0.1%	35	6142	1127	75	328	12	9	30	2	0	0	0	0	10	7770
10/31/2019	0.4%	79.3%	14.8%	0.9%	4.0%	0.1%	0.1%	0.2%	0.0%	0.0%	0.0%	0.0%	0.0%	0.2%	30	6177	1149	71	308	6	10	18	1	0	0	0	0	19	7789
Total	0.4%	79.3%	14.5%	0.9%	4.1%	0.1%	0.1%	0.3%	0.0%	0.0%	0.0%	0.0%	0.0%	0.2%	101	18360	3349	218	940	26	32	71	4	2	0	0	0	49	23152

Class Data Summary

Bin #	1	2	3	4	5	6	7	8	9	10	11	12	13	14	Total Volume
Bin Class	Cycles	Cars + Trailer	2 Axle Long	Bus	2 Axle 6-Tire	3 Axle Single	4 Axle Single	4 Axle Double	5 Axle Double	>6 Axle Double	<6 Axle Multi	6 Axle Multi	>6 Axle Multi	Unclassified	Total Volume
Survey Total	101	18360	3349	218	940	26	32	71	4	2	0	0	0	49	23152
% Total	0.4%	79.3%	14.5%	0.9%	4.1%	0.1%	0.1%	0.3%	0.0%	0.0%	0.0%	0.0%	0.0%	0.2%	100%
Accumulated %	0.4%	79.7%	94.2%	95.1%	99.2%	99.3%	99.5%	99.8%	99.8%	99.8%	99.8%	99.8%	99.8%	100.0%	
Inv. Accum. %	99.6%	20.3%	5.8%	4.9%	0.8%	0.7%	0.5%	0.2%	0.2%	0.2%	0.2%	0.2%	0.2%	0.0%	



Classification Descriptions

Bin #	Bin Description
1	Motorcycles
2	Passenger cars, including those with recreational trailers
3	2-axle pick-ups, vans, and RVs, including those with recreational trailers
4	Buses
5	2-axle, 6-tire single units
6	3-axle single units
7	4-axle single units
8	3-axle or 4-axle double unit
9	5-axle double unit
10	6-, 7-, or 8-axle double unit
11	5-axle multiple unit
12	6-axle multiple unit
13	7-or-more-axle multiple unit
14	Vehicles that could not be classified

Site notes:

Royal Oak Dr between Emily Carr Dr and Chatterton Way

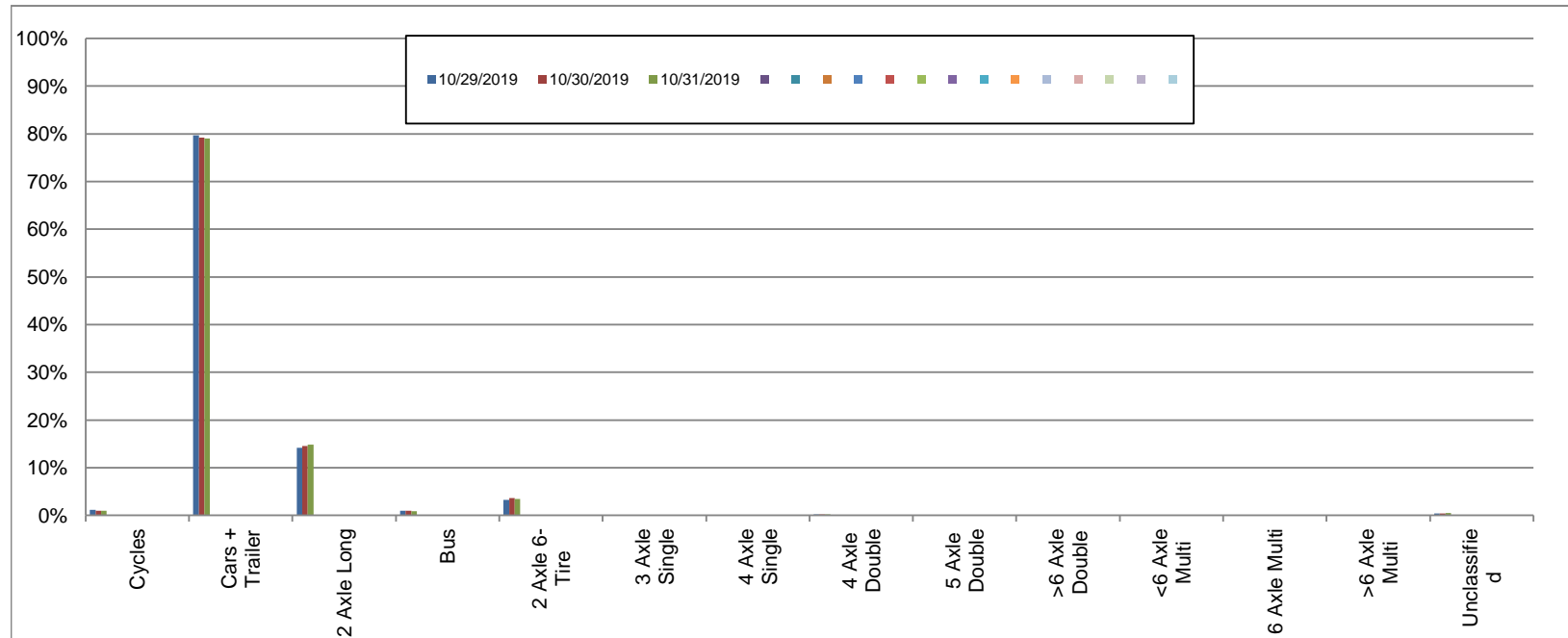
Eastbound

October 29, 2019 to October 31, 2019

Daily Class Bin Percentages															Daily Class Bin Volumes										Total Volume					
Bin #	1	2	3	4	5	6	7	8	9	10	11	12	13	14	1	2	3	4	5	6	7	8	9	10		11	12	13	14	
Bin Class	Cycles	Cars + Trailer	2 Axle Long	Bus	2 Axle 6-Tire	3 Axle Single	4 Axle Single	4 Axle Double	5 Axle Double	>6 Axle Double	<6 Axle Multi	6 Axle Multi	>6 Axle Multi	Unclassified	Cycles	Cars + Trailer	2 Axle Long	Bus	2 Axle 6-Tire	3 Axle Single	4 Axle Single	4 Axle Double	5 Axle Double	>6 Axle Double	<6 Axle Multi	6 Axle Multi	>6 Axle Multi	Unclassified		
10/29/2019	1.2%	79.7%	14.2%	1.0%	3.3%	0.0%	0.0%	0.2%	0.0%	0.0%	0.0%	0.0%	0.0%	0.4%	90	6020	1072	76	246	2	1	15	0	0	0	0	0	0	33	7555
10/30/2019	1.0%	79.2%	14.5%	1.0%	3.6%	0.1%	0.0%	0.2%	0.0%	0.0%	0.0%	0.0%	0.0%	0.4%	75	6042	1107	75	274	5	3	16	0	0	0	0	0	0	33	7630
10/31/2019	1.0%	79.0%	14.8%	0.9%	3.4%	0.1%	0.0%	0.2%	0.0%	0.0%	0.0%	0.0%	0.0%	0.5%	78	6105	1142	67	266	6	3	18	1	0	0	0	0	0	39	7725
Total	1.1%	79.3%	14.5%	1.0%	3.4%	0.1%	0.0%	0.2%	0.0%	0.0%	0.0%	0.0%	0.0%	0.5%	243	18167	3321	218	786	13	7	49	1	0	0	0	0	105	22910	

Class Data Summary

Bin #	1	2	3	4	5	6	7	8	9	10	11	12	13	14	Total Volume
Bin Class	Cycles	Cars + Trailer	2 Axle Long	Bus	2 Axle 6-Tire	3 Axle Single	4 Axle Single	4 Axle Double	5 Axle Double	>6 Axle Double	<6 Axle Multi	6 Axle Multi	>6 Axle Multi	Unclassified	Total Volume
Survey Total	243	18167	3321	218	786	13	7	49	1	0	0	0	0	105	22910
% Total	1.1%	79.3%	14.5%	1.0%	3.4%	0.1%	0.0%	0.2%	0.0%	0.0%	0.0%	0.0%	0.0%	0.5%	100%
Accumulated %	1.1%	80.4%	94.9%	95.8%	99.2%	99.3%	99.3%	99.5%	99.5%	99.5%	99.5%	99.5%	99.5%	100.0%	
Inv. Accum. %	98.9%	19.6%	5.1%	4.2%	0.8%	0.7%	0.7%	0.5%	0.5%	0.5%	0.5%	0.5%	0.5%	0.0%	



Classification Descriptions

Bin #	Bin Description
1	Motorcycles
2	Passenger cars, including those with recreational trailers
3	2-axle pick-ups, vans, and RVs, including those with recreational trailers
4	Buses
5	2-axle, 6-tire single units
6	3-axle single units
7	4-axle single units
8	3-axle or 4-axle double unit
9	5-axle double unit
10	6-, 7-, or 8-axle double unit
11	5-axle multiple unit
12	6-axle multiple unit
13	7-or-more-axle multiple unit
14	Vehicles that could not be classified

Site notes: